



MK2B series

Direct-acting Type

N.C.

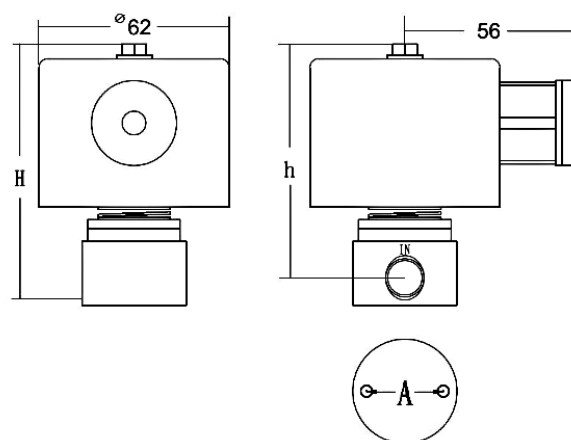
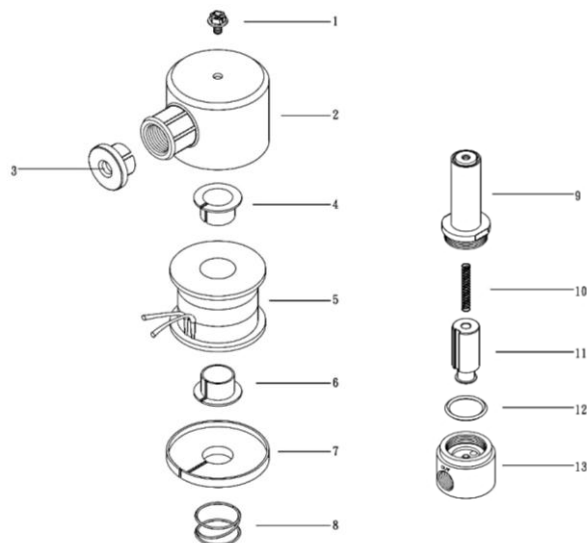
- Suitable for air, inert gases, vacuum (10 Torr), water, kerosene, and oils with viscosity below 50 cst.
- Normally closed direct-acting solenoid valve with an operating pressure range from 10 Torr to 100 kgf/cm², offering fast response and excellent durability.

Water

Air

Gas

Oil



■ Main Parts List

NO.	Descriptions	Material
1.	Hexagon bolt	SWRM
2.	Coil bonnet	SPC
3.	Lead Cap	ABS
4.	Bobbin sleeve	SPC
5.	Coil	B Class
6.	Bobbin sleeve	SPC
7.	Spacer	SPC
8.	Coil spring	SWP2
9.	Packless a'ssy	SUS304, KM-31
10.	Plunger spring	SUS 304
11.	Plunger	KM-31
12.	O ring	NBR
13.	Valve body	SUS 303L

* SUS 303L on request

■ Common Specification

Item	Description
Fluid	Air, Gas, Vacuum, Water, Oil
Fluid Temperature	0 ~ 90°C
Power Source	AC 24, 110, 220, 380V 50/60Hz DC 12, 24V
Insulation Class	B Class = Max. 130°C
Power Consumption	28 VA
Fluid Viscosity	< 50 cst
Installation	Horizontal / Vertical
Operation	Normally Closed
Coil type	Iron case type : IP54

■ Model Type

M K 2 B - 5 0 3 0 - 8 - S C S 1 3

Series

Valve Body · SCS13 : SUS304

Size · 8 (1/4")

Pressure & Orifice

■ Valve Specification

Model	Connection	Orifice (mm)	Max. Pressure (kgf/cm ²)		Cv Value	Dimensions (mm)			Mounting hole (mm)	Weight (g)
			Air	Water, Oil		L	H	h		
MK2B-5030-8-SCS13	PT 1/4" (NPT)	3	50	40	0.35	34	85	76	A = 25 2-M4*0.8	800
MK2B-10020-8-SCS13		2	100	80	0.22					