



MG-10

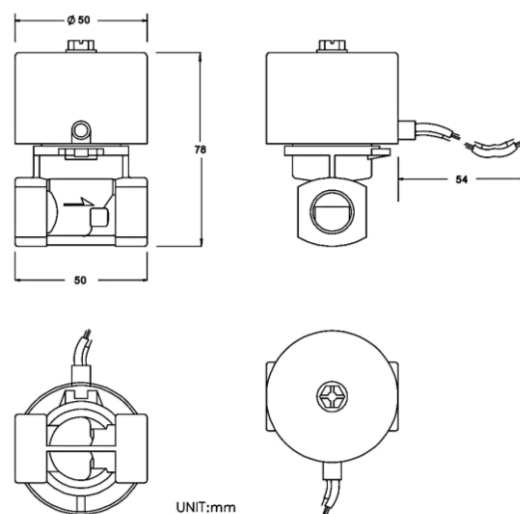
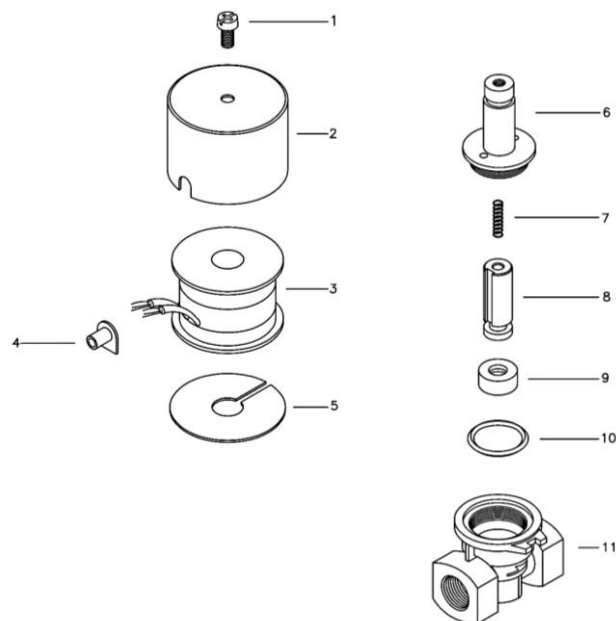
Direct-acting Type

N.C.

- Suitable for liquefied petroleum gas, low vacuum, and air.
- Normally closed direct-acting solenoid valve designed for low pressure and high flow.
- Operates directly in low-pressure conditions.

Vacuum

Gas



■ Main Parts List

NO.	Descriptions	Material
1.	Bolt	SWRM
2.	Coil bonnet	SPC
3.	Solenoid coil	B Class
4.	Lead collar	NBR
5.	Spacer	SPC
6.	Plunger tube set	SUS 304, KM-31
7.	Plunger spring	SUS 304
8.	Plunger	KM-31
9.	Plunger seat	H NBR, Silicon
10.	O ring	NBR
11.	Valve body	Zinc alloy

■ Common Specification

Item	Description
Fluid	LPG Gas, Vacuum
Fluid Temperature	0 ~ 60°C
Power Source	AC 24, 110, 220, 380V 50/60Hz DC 12, 24V
Insulation Class	B Class = Max. 130°C
Power Consumption	22 VA
Fluid Viscosity	-
Installation	Vertical
Operation	Normally Closed
Coil type	Iron case type : IP54

■ Model Type

MG - 10
Series Size : 10 (3/8")

■ Valve Specification

Model	Connection	Orifice (mm)	Max. Pressure (kgf/cm ²)	Cv Value	Weight (g)
			LPG Gas		
MG-10	PT 3/8"	10	0 - 1	1.7	470