



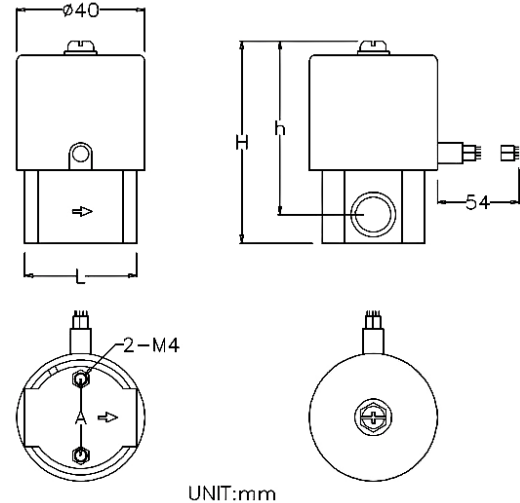
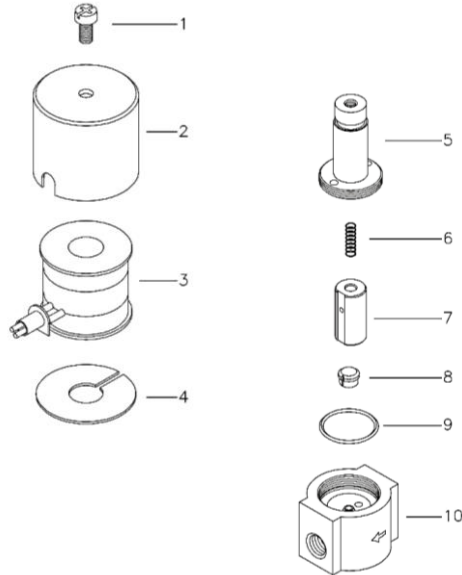
MK2-POM

Direct-acting Type

N.C.

- Suitable for water and carbonated water, specifically designed for household reverse osmosis water filtration systems.
- Normally closed direct-acting two-way solenoid valve with fast response and long service life.

Water



Main Parts List

NO.	Descriptions	Material
1.	Bolt	SWRM
2.	Coil bonnet	SPC
3.	Solenoid coil	B Class
4.	Spacer	SPC
5.	Plunger tube unit	SUS304, KM-31
6.	Spring	SUS 304
7.	Plunger	KM-31
8.	Plunger seat	EPDM
9.	O ring	EPDM
10.	Valve body	POM

Common Specification

Item	Description
Fluid	Water
Fluid Temperature	Max 60°C
Power Source	AC 24, 110, 220, 380V 50/60Hz DC 12, 24V
Insulation Class	B Class = Max. 130°C
Power Consumption	15 VA
Fluid Viscosity	-
Installation	Horizontal / Vertical
Operation	Normally Closed
Coil type	Iron case type : IP54

Model Type

M K 2 - 0 8 2 5 - 8 P O M

Series

Size

Valve Specification

Model	Connection	Orifice (mm)	Pressure Range (kgf/cm ²)	Cv Value	Dimensions (mm)			Mounting hole (mm)	
					L	H	h		
MK2-0825-8POM	NPT 1/4"	2.5	0-8	0.22	35	64	53	A = 24	2-M4