



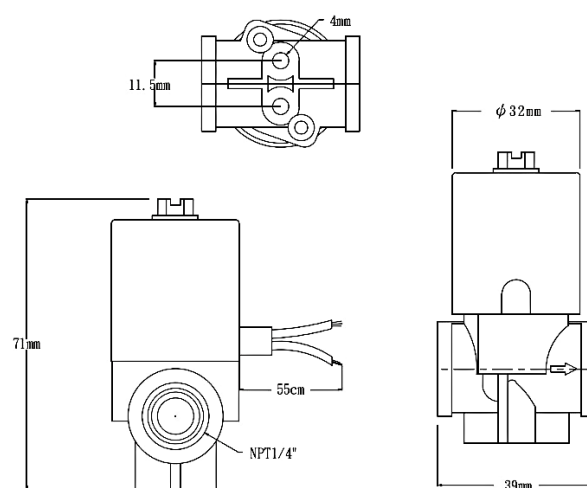
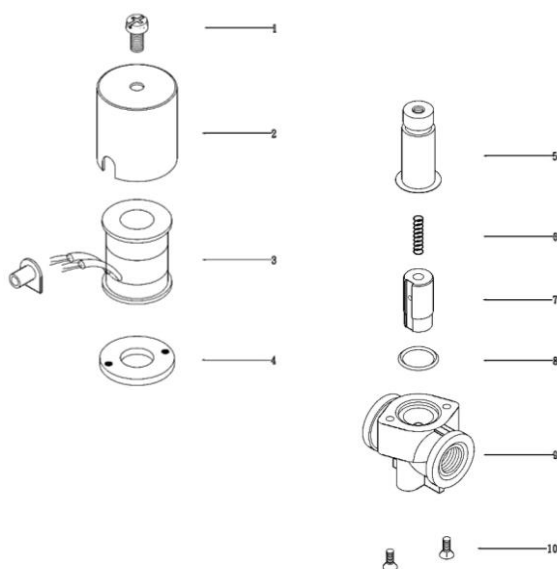
MS-NL

Direct-acting Type

N.C.

- Suitable for water and carbonated water, specifically designed for household reverse osmosis water filtration systems.
- Direct-acting two-way normally closed solenoid valve with fast operation and long service life.

Water



■ Main Parts List

NO.	Descriptions	Material
1.	Bolt	SWRM
2.	Coil bonnet	SPC
3.	Solenoid coil	B Class
4.	Spacer	SPC
5.	Plunger tube unit	SUS304 KM-31
6.	Spring	SUS 304
7.	Plunger	KM-31
8.	O ring	EPDM
9.	Valve body	NYLON 66
10.	Bolt	SUS 304

■ Common Specification

Item	Description
Fluid	Water
Fluid Temperature	Max 60°C
Power Source	AC 24, 110, 220, 380V 50/60Hz DC 12, 24V
Insulation Class	B Class = Max. 130°C
Fluid Viscosity	-
Installation	Horizontal
Operation	Normally Closed
Coil type	Iron case type : IP54

■ Model Type

MS - 0825 - 8NL

Series

Size

■ Valve Specification

Model	Connection	Orifice (mm)	Pressure Range (kgf/cm ²)	Cv Value	Weight (g)
MS-0825-8NL	NPT 1/4"	2.5	0-8	0.22	140