

MK3 Motorized 3-Way Ball Valve - Spring Return

Common Specification

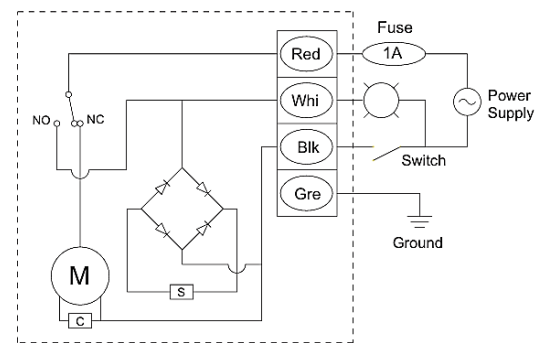
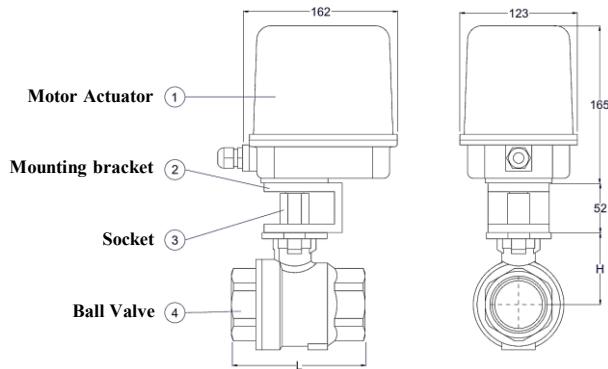


| Item | Description |
|---------------------|--|
| Rated Consumption | <ul style="list-style-type: none"> • AC100, 110, 115V 50/60Hz • AC200, 220, 230V 50/60Hz |
| Power Consumption | 80VA(Motor) 8VA(Solenoid) |
| Media | Oil, Air, Water |
| Fluid temp. | -5 ~ 120°C |
| Ambient Temp. | 0 ~ 50°C |
| Max. Pressure Diff. | 10 kgf/cm ² (50A 3kgf/cm ²) |
| Max. Pressure | 20 kgf/cm ² |
| Dust/Waterproof | IP65 |
| Time for 90° | ~ 2.5 sec |
| Installation | Vertical ± 15° |

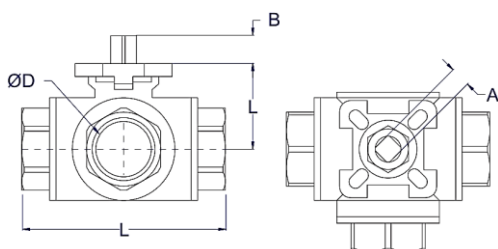
Features

- Two power cords wiring. (Same wiring sketch as Solenoid Valve)
- MK3 Actuator are fit for assembling with 2 way or 3-way ball valves.
- MK3 Actuator can set it as emergence shut-off (power on to open) or set it as emergence open (power off to close).
- MK3 are suit to pressure range from 0 - 10 kg*f/cm .
- Acting time 2.5 seconds from close position to open position, vice versa.
- Power failure or electric outage, MK3 are available for manual operation.
- With waterproof dust proof aluminum housing.

Wiring Sketch of Actuator



Dimensions (mm)



| Size | ØD | L | H | A | B | ISO 5211 |
|--------|------|-----|----|----|------|----------|
| 1/2" | 15 | 75 | 38 | 9 | 10 | F03-F04 |
| 3/4" | 20 | 86 | 41 | 9 | 10 | F03-F04 |
| 1" | 25.4 | 110 | 47 | 11 | 14 | F04-F05 |
| 1-1/2" | 38 | 137 | 68 | 14 | 19.5 | F05-F07 |
| 2" | 50 | 158 | 80 | 14 | 19.5 | F07 |